

## Fast Facts:

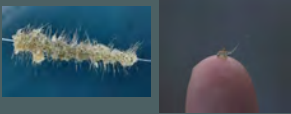
Surface Area: 7314 acres

Littoral Area: 1478 acres

Shore Length: 103 miles

Max Depth: 126 feet

Aquatic Invasive Species:  
Spiny waterflea



## Fish Species:

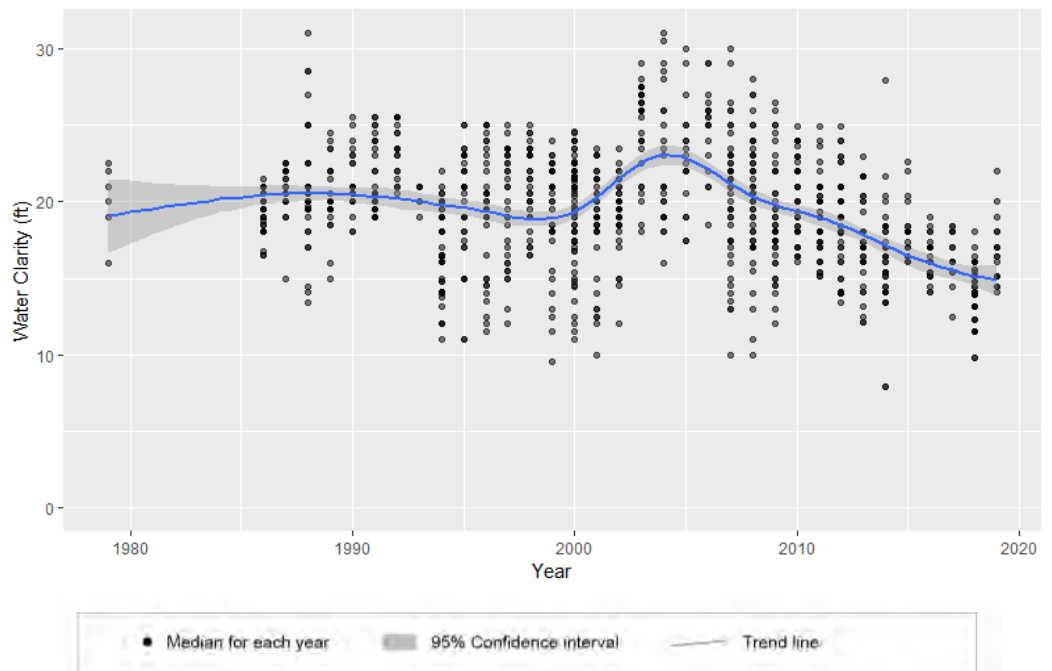
- Black crappie
- Bluegill
- Burbot
- Crappie
- Green sunfish
- Hybrid sunfish
- Lake trout
- Lake whitefish
- Northern Pike
- Pumpkinseed
- Rock bass
- Smallmouth bass
- Tullibee
- Walleye
- Yellow perch
- Shorthead redhorse
- White sucker
- Golden shiner
- Rainbow smelt
- Sculpin

# Burntside Lake

## Water quality report for: Burntside Lake

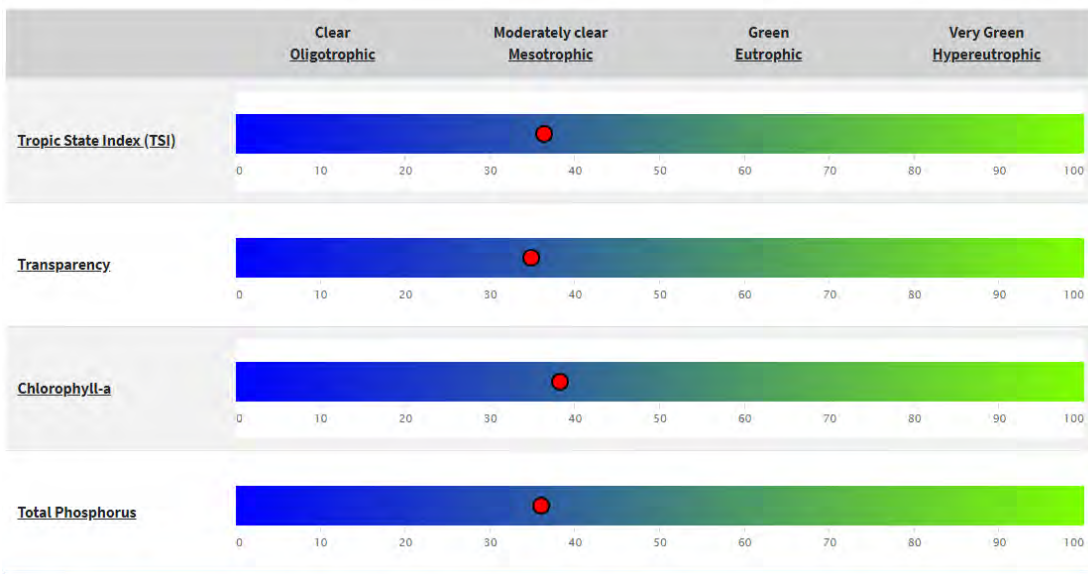
Burntside Lake is a well loved lake located west of Ely, MN. It is know for it's clear water, rocky shoreline, and many recreational activities. It is also the drinking water source for the city of Ely.

Water quality data for Burntside Lake 1979-2019



Burntside Lake is suitable for swimming and recreation according to the Minnesota Pollution Control Agency (MPCA). While the lake shows a decreasing trend in water clarity in recent years, the lake still has very good water quality since monitoring began in the 1970s.

Water clarity is an excellent indicator of water quality and is often collected by volunteers. The Minnesota Pollution Control Agency's Citizen Lake Monitoring Program provides resources for volunteers to collect data to inform citizens, resource professionals, and decision makers on the quality of our lakes.



Measurements of water clarity (transparency), algae levels (Chlorophyll-a), and nutrients (Phosphorus) tell us that Burntside Lake is a moderately clear (Mesotrophic) lake.

Ways that you can protect Burntside Lake's water quality and help it continue to stay clear include keeping a natural shoreline, creating a natural buffer between homes and the shoreline, preventing shoreline erosion, and following other best management practices for shoreline properties.

## ➤ Assisting Lakeshore Landowners in Conservation

We are fortunate. North St. Louis County is not just one of the most beautiful places in Minnesota, but one of the most stunning places in the country! For generations we have relied on our lakes for income, relaxation, family memories, and ecological stability.



We have some of the cleanest lakes in the state, and in the country. Our lakes and rivers are the sourcewaters of clean drinking water for many larger cities up and downstream. Our county is home to a Triple Divide, which means nothing flows in, it all flows out! Therefore we are stewards of many waters. The map to the left shows where all our waters are going.

Lakeshore property owners are firsthand witnesses when imbalances occur within the watershed. All the surrounding land within a watershed contributes to the overall health or deterioration of water quality. North St. Louis SWCD continually works with all types of landowners to protect natural resources and water quality within our watersheds. We assist landowners of all kinds in conservation practices that will achieve the best outcome for the watershed and our many lakes.



If you would like more information on how we can assist you in doing your part to protect our waters please do not hesitate to ask. There are many proven conservation practices that lakeshore landowners can do to improve water quality.

[www.nslswcd.org](http://www.nslswcd.org) | 505 3rd St N Ste A, Virginia, MN 55792 | (218) 749-2000

